



GAT MONTHLY MEMBERSHIP PROGRESS REPORT

Results as of: 4/30/2023

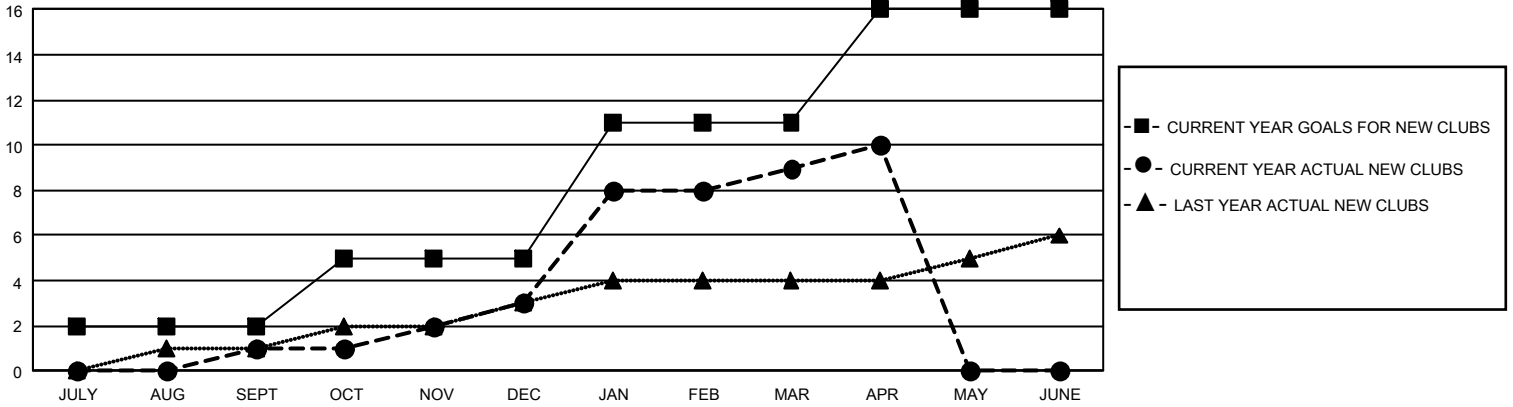
GMT Constitutional Area 4, Group C

REPORT DOES NOT INCLUDE CLUBS IN UNDISTRICTED AREAS.

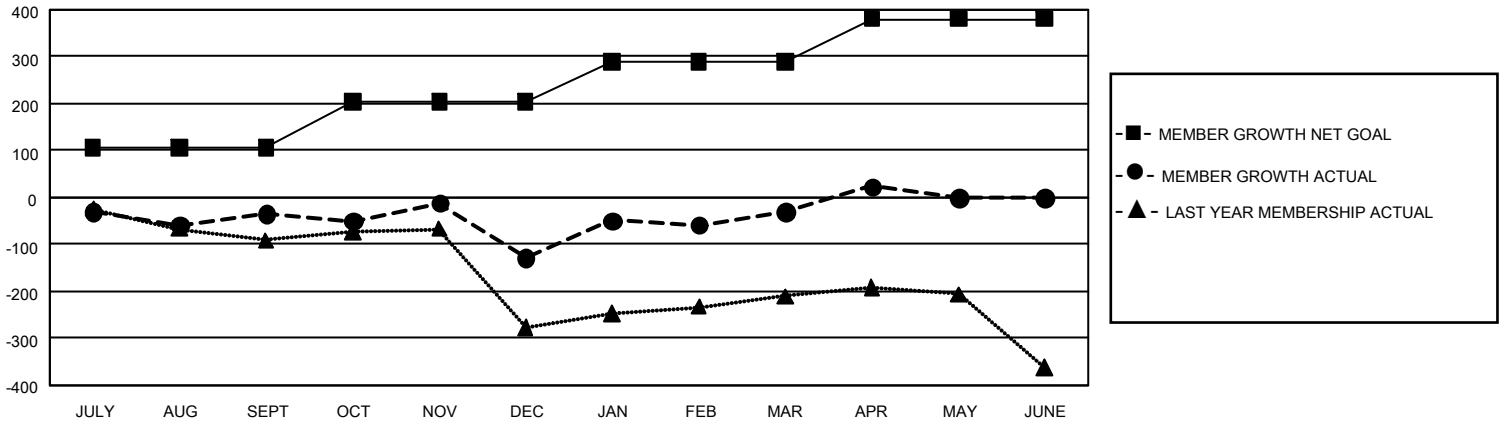
| Clubs | | | |
|-----------------------|---------------|-----------|---------------|
| RESULTS FOR 2022-2023 | | | |
| QUARTER | NEW CLUB GOAL | NEW CLUBS | DROPPED CLUBS |
| JULY/AUG/SEPT | 6 | 1 | 5 |
| OCT/NOV/DEC | 9 | 2 | 5 |
| JAN/FEB/MAR | 18 | 6 | 2 |
| APR/MAY/JUNE | 15 | 1 | 0 |

| Members | | | |
|-----------------------|------------------------|----------------------|--|
| RESULTS FOR 2022-2023 | | | |
| QUARTER | MEMBER GROWTH NET GOAL | MEMBER GROWTH ACTUAL | DROPPED MEMBERS ACTUAL (including transfers) |
| JULY/AUG/SEPT | 106 | 171 | 151 |
| OCT/NOV/DEC | 98 | 189 | 275 |
| JAN/FEB/MAR | 86 | 327 | 206 |
| APR/MAY/JUNE | 90 | 90 | 35 |

GOALS AND ACTUAL NEW CLUBS CUMULATIVE



GOALS AND ACTUAL MEMBERS CUMULATIVE



| | | | |
|--|--|--|-------------------------------------|
| DROPPED CLUBS: 12 | 176 CLUBS OF 423 ADDED 1 OR MORE NEW MEMBERS | <u>GENDER DISTRIBUTION</u> | |
| | | MALE 4,529 (53.81%) FEMALE 3,883 (46.14%) NON BINARY 0 (0.00%) PREFER NOT TO ANSWER 4 (0.05%) | |
| <u>DROPPED MEMBERS</u> | | CLICK HERE FOR CUMULATIVE MEMBERSHIP DATA | TOTAL FAMILY UNIT MEMBERS 1,002 |
| DECEASED 32 CLUB CANCELLED 124 OTHER 511 TOTAL 667 | | | FAMILY MEMBERS PAYING HALF DUES 606 |